

Oboe II

Messe in d

JWV 2

Edited by Alexander Reuter

Joseph Gabriel Rheinberger
(1839-1901)

1. Kyrie

11 2 4 pp pp

19 p p

25 **A** 3

33 legato f

40

47 cresc. ff

54 sf rit. A tempo ff dim. p pp sflegato

62 **B** p

69 3

77 rit. ritenuto pp sf pp

2. Gloria

1 **Allegretto moderato**

mf *p* *f*

8 *p* rit.

22 *p* *espress.* *p*

30 **C Andante**

pp

41 **Tranquillo**

p 3

48 **D Allegro**

f *f*

56 *p* *f*

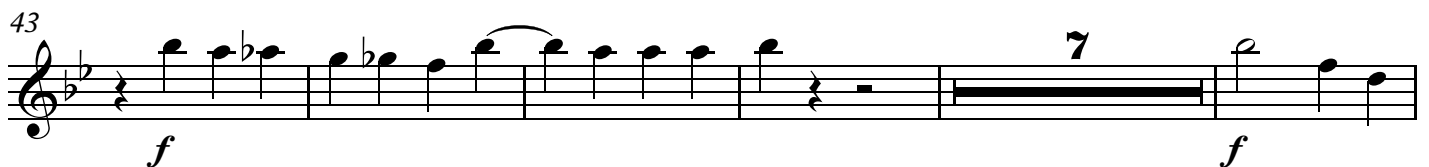
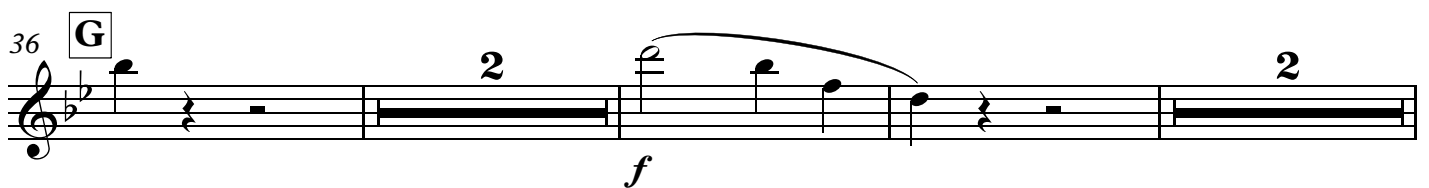
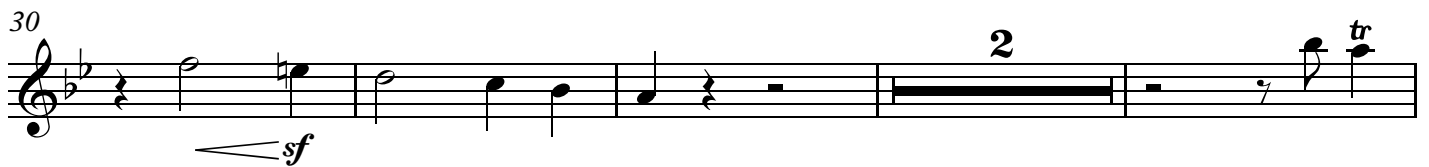
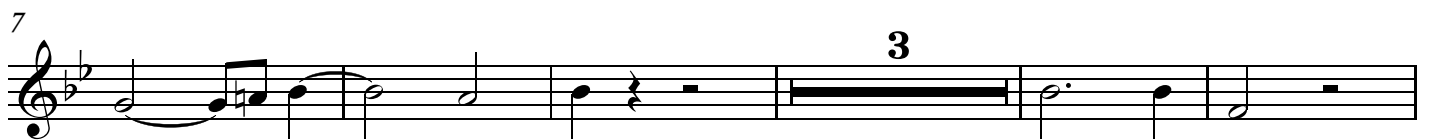
63

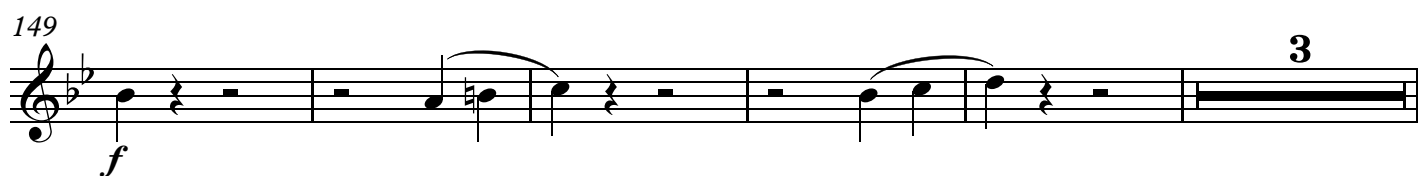
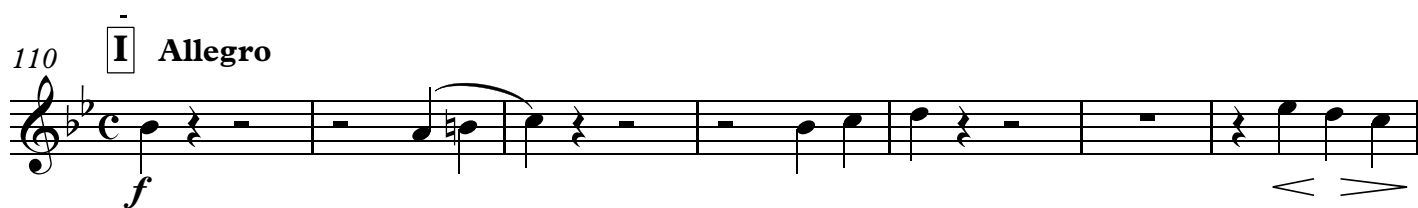
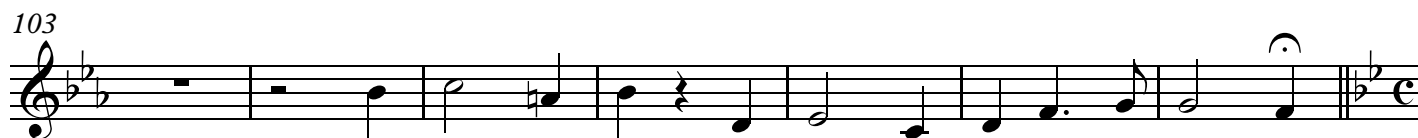
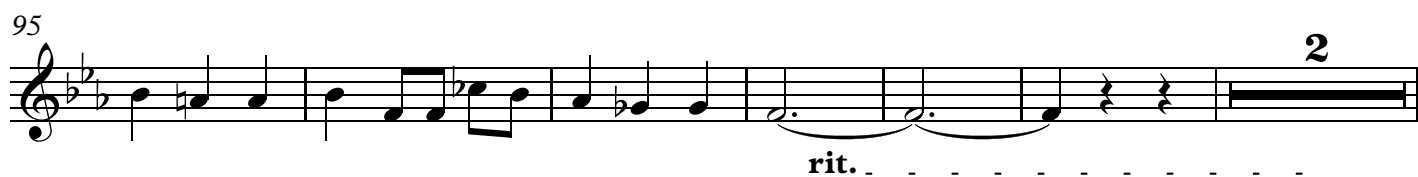
69 **E** 12 3

89 *ff* **F**



3. Credo





157 *pp dolce* 4

166 **J** 29

200 **K** *p* *p*

206

213 *ff*

219 *sf sf f*

4. Sanctus

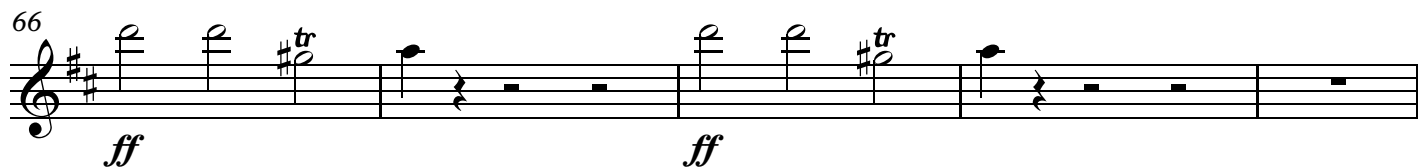
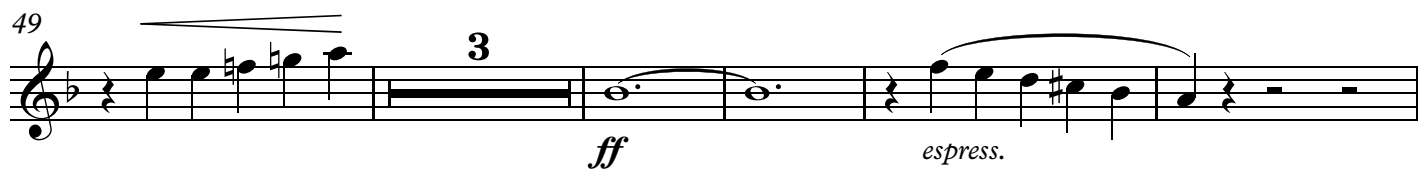
p p p ff

8 4 *p*

17 *p p p* 2

24 *rit.*

28 **L** Allegro *mf p legatissimo* 2



Oboe II
5. Benedictus

7

Larghetto

N

3 7

15 3

23 mf sf

28 O 2 f

35 2

42 P 2 9 sf

57 ff

Detailed description: This block contains the musical notation for the first section of the Oboe II part, measures 1 through 57. The key signature has one flat (B-flat), and the time signature is 6/8. The tempo is marked 'Larghetto'. The score includes various musical notations such as rests, eighth notes, quarter notes, and sixteenth notes. There are several dynamic markings: 'pp' (pianissimo) at measure 15, 'mf' (mezzo-forte) at measure 23, 'f' (forte) at measure 28, and 'ff' (fortissimo) at measure 57. There are also articulation marks like accents and slurs. Rehearsal marks are indicated by letters in boxes: 'N' at measure 1, 'O' at measure 28, and 'P' at measure 42. Measure numbers 3, 7, 15, 23, 28, 35, 42, and 57 are placed at the beginning of their respective lines.

6. Agnus Dei

Adagio ma non troppo

2 11

espress. mf

19 Q 4 ff

29 p mf

Detailed description: This block contains the musical notation for the second section of the Oboe II part, measures 1 through 29. The key signature has one flat (B-flat), and the time signature is 3/4. The tempo is marked 'Adagio ma non troppo'. The score includes various musical notations such as rests, eighth notes, quarter notes, and half notes. There are dynamic markings: 'espress.' (espressivo) at measure 1, 'mf' (mezzo-forte) at measure 11, 'p' (piano) at measure 19, and 'ff' (fortissimo) at measure 29. There are also articulation marks like slurs. Rehearsal marks are indicated by letters in boxes: 'Q' at measure 19. Measure numbers 2, 11, 19, and 29 are placed at the beginning of their respective lines.

35

mf *pp animoso*

41

rit.

47

R Moderato alla breve
19

71

mf

89

96

S 12 *ff* *p*

113

mf *p*

124

p

129

sf *sf* *ff*