

DING DONG MERRILY ON HIGH

Englisches Weihnachtslied
Arrangement: Horst Hinze (2015)

Rumba-Style

Ding dong mer-ri-ly on high in heav'n the bells are

ding ding ding ding ding ding

dm dm...

ding ding ding ding ding ding

ring - ing ding ding dong ding dingdong ding ding dong

ding ding dong dongding dong dong dingdong dong ding dong

ding - e ding dong Ding dong ve-ri-ly the sky is riv'n with An - gel

ding din - ge - dong

Glo - - - - -

ding ding - ge dong Glo - ri - a - , Glo - ri - a

sing - sing

Glor - ri - a - , Glo - ri - a,

Glo - ri - a - , Glo - ri - a - , Glo - ri -

Glo - - - - -

Glo - ri - a - , Glo - ri - a, Glo - ri - a -

Detailed description: This system contains the first two staves of a musical score. The top staff is in treble clef with a key signature of two flats (B-flat and E-flat). It features a melodic line with eighth and quarter notes, and a bass line with dotted half notes and quarter notes. The lyrics 'Glo - ri - a - , Glo - ri - a - , Glo - ri -' are written below the treble staff. The bottom staff is in bass clef with a similar key signature. It features a bass line with dotted half notes and quarter notes. The lyrics 'Glo - ri - a - , Glo - ri - a, Glo - ri - a -' are written below the bass staff. A large brace on the left side groups both staves together.

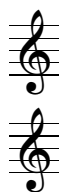
o - ri - a, Ho - san - na in Ex - cel - sis!

Glo - ri - a, Ho - san - na in Ex - cel - sis!

o - ri - a - , Ho - san - na in Ex - cel - sis!

Glo - ri - a, Ho - san - na - in Ex - cel - sis!

Detailed description: This system contains the next two staves of the musical score. The top staff is in treble clef with a key signature of two flats. It features a melodic line with quarter and half notes, and a bass line with dotted half notes and quarter notes. The lyrics 'o - ri - a, Ho - san - na in Ex - cel - sis!' are written below the treble staff. The bottom staff is in bass clef with a similar key signature. It features a bass line with dotted half notes and quarter notes. The lyrics 'Glo - ri - a, Ho - san - na in Ex - cel - sis!' are written below the bass staff. A large brace on the left side groups both staves together.



2. E'en so here below, below,
 Let steeple bells be swungen,
 And "Io, io, io!"
 By priest and people sungen.
 Gloria, Hosanna in excelsis!

3. Pray you, dutifully prime
 Your matin chime, ye ringers;
 May you beautifully rime
 Your evetime song, ye singers.
 Gloria, Hosanna in excelsis!