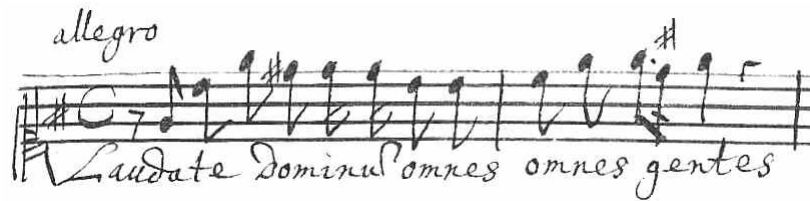


LAUDATE DOMINUM



Psalm 117 (vulgate 116)

Erasmus von der Muhl
(17th century)

Allegro

Violin-1

Violin-2

Viola-1

Viola-2

Canto-1
Lau-da-te Do-mi-num om-nes, om-nes gen - tes,

Canto-2

Alto

Tenore

Basso

Basso continuo
6 # 6 6 7 6 6 # 6 6 7 6

Source: Manuscript parts and tabutura (1676-1677), Düben Collection, Uppsala Universitet.
taken from his "Psalmodia Davidica" printed in Elwangen 1674

Laudate Dominum

4

Vi1

Vi2

Va1

Va2

4

C1

C2

A

T

B

om-nes, om-nes, om-nes gen - tes,

om-nes, om-nes, om-nes gen - tes, Lau-da-te e-um om-nes, om-nes po-pu-li.

om-nes, om-nes, om-nes gen - tes,

om-nes, om-nes, om-nes gen - tes,

om-nes, om-nes, om-nes gen - tes,

4

6 6 4 # 6 # 6 6 7 6 6 # 6 5 6 7 6

Laudate Dominum

8

Vi1

Vi2

Va1

Va2

8

C1

om - nes, om - nes, om - nes po - pu - li. Quo - - - ni - am con - fir - ma - ta est

C2

om - nes, om - nes, om - nes po - pu - li. Quo - ni - am con - fir - ma - ta est

A

om - nes, om - nes, om - nes po - pu - li. Quo - ni - am con - fir - ma - ta est

T

om - nes, om - nes, om - nes po - pu - li. Quo - ni - am con - fir - ma - ta est

B

om - nes, om - nes, om - nes po - pu - li. Quo - ni - am con - fir - ma - ta est

8

6 5/4 # # # 6 6/5

Laudate Dominum

11

Vi1

Vi2

Va1

Va2

Musical notation for Violins (Vi1, Vi2) and Violas (Va1, Va2). The staves show melodic lines in treble and bass clefs with a key signature of one sharp (F#).

11

C1

C2

A

T

B

11

su - per nos mi-se-ri-cor-di-a e - jus,

su - per nos mi-se-ri-cor-di-a e - jus,

su - per nos mi-se-ri-cor-di-a e - jus, et ve - ri - tas Do - mi-ni ma - net, ma-net in æ-ter -

su - per nos mi-se-ri-cor-di-a e - jus, et ve - ri - tas Do - mi-ni ma - net, ma-net in æ-ter -

su - per nos mi-se-ri-cor-di-a e - jus, et ve - ri - tas, ve-ri-tas ma-net, ma-net in æ-ter -

11

6 5 4 # # 6 6 7 6

Musical notation for Chorus (C1, C2), Soprano (A), Tenor (T), Bass (B), and figured bass. The vocal parts include Latin lyrics. The figured bass line is in bass clef with a key signature of one sharp (F#).

Laudate Dominum

15

Vi1

Vi2

Va1

Va2

Musical notation for Violins (Vi1, Vi2) and Violas (Va1, Va2). The staves show rhythmic patterns with eighth and sixteenth notes, and rests. The key signature is one sharp (F#).

15

C1

C2

A

T

B

num. Glo-ri-a Pa-tri et Fi-li-o, et Spi-ri-tu-i, et Spi-ri-tu-i San-cto. Si-cut

num. Glo-ri-a Pa-tri et Fi-li-o, et Spi-ri-tu-i, et Spi-ri-tu-i San-cto. Si-cut

num. Glo-ri-a Pa-tri et Fi-li-o, et Spi-ri-tu-i, et Spi-ri-tu-i San-cto.

num. Glo-ri-a Pa-tri et Fi-li-o, et Spi-ri-tu-i, et Spi-ri-tu-i San-cto. Si-cut

num. Glo-ri-a Pa-tri et Fi-li-o, et Spi-ri-tu-i, et Spi-ri-tu-i San-cto.

Musical notation for Chorus (C1, C2), Soprano (A), Tenor (T), and Bass (B). The staves show vocal lines with lyrics. The key signature is one sharp (F#).

15

6 # 6 5/4 # #

Musical notation for a single staff at the bottom of the page, likely a basso continuo line. It shows a sequence of notes and rests with figured bass notation below: 6 # 6 5/4 # #.

Laudate Dominum

18

Vi1

Vi2

Va1

Va2

C1

C2

A

T

B

18

e-rat in prin-ci - pi-o, et in sæ-cu-la sæ-cu-lo-rum, sæ-cu-

e-rat in prin-ci - pi-o, et in sæ-cu-la sæ-cu-lo-rum, sæ-cu-

et nunc, et nunc et sem - per, et in sæ-cu-la sæ-cu-lo-rum.

e-rat in prin-ci - pi-o, et nunc, et nunc et sem - per, et in sæ-cu-la sæ-cu-lo-rum.

et nunc, et nunc, et nunc et sem - per, et in sæ-cu-la sæ-cu-lo-rum.

18

b 4 # # b 6 5b 6

Laudate Dominum

22

Vi1

Vi2

Va1

Va2

22

C1

C2

A

T

B

lo - rum. A - men,

lo - rum. A - men,

A - men, a - men, a -

A - men, a - men, a -

22

Laudate Dominum

26

Vi1

Vi2

Va1

Va2

C1

C2

A

T

B

26

a - men, a - men, a - men, a - men, a - men, a - men.

a - men, a - men, a - men, a - men, a - men, a - men.

men, a - men, a - men, a - men, a - men, a - men, a - men.

men, a - men, a - men, a - men, a - men, a - men, a - men.

A - men, a - men, a - men, a - men, a - men.

b # # # # 6 5 #

27

Laudate Dominum *allegro*

5 voces in stromenti

E. V. der Mischl

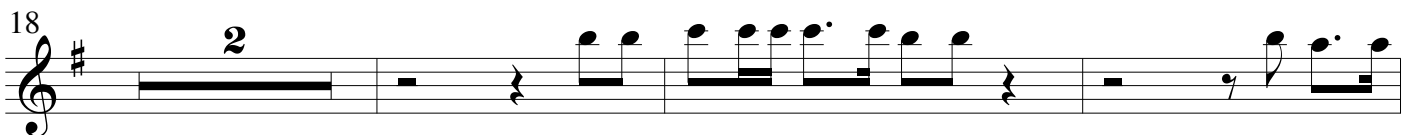
Handwritten musical score for five voices and instruments, including a basso continuo line with figured bass notation. The score includes various musical notations such as clefs, notes, rests, and dynamic markings.

LAUDATE DOMINUM

Psalm 117 (vulgate 116)

Erasmus von der Muhl
(17th century)

Allegro

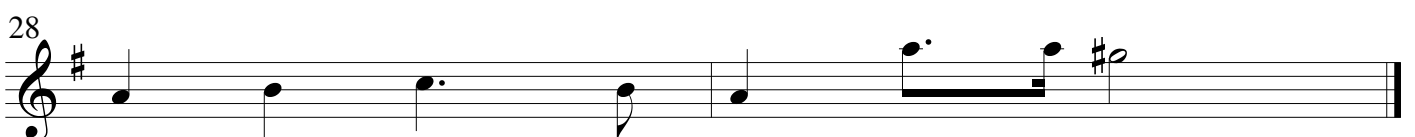
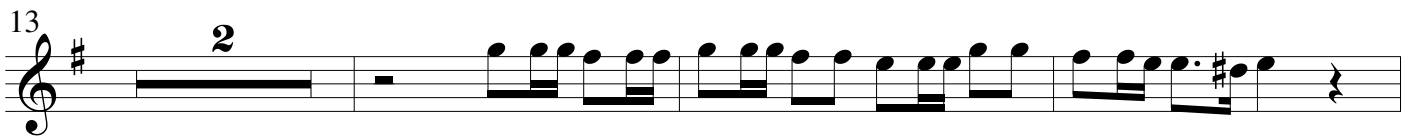


LAUDATE DOMINUM

Psalm 117 (vulgate 116)

Erasmus von der Muhl
(17th century)

Allegro

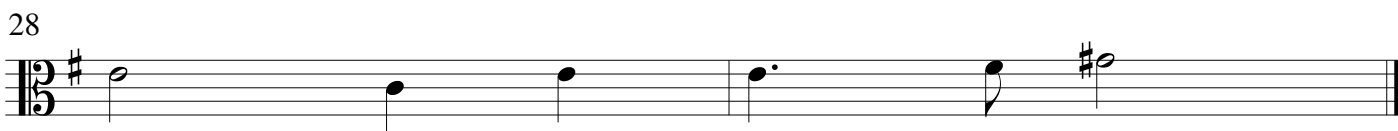
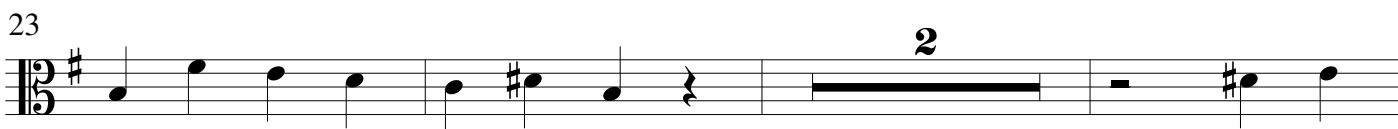


LAUDATE DOMINUM

Psalm 117 (vulgate 116)

Erasmus von der Muhl
(17th century)

Allegro

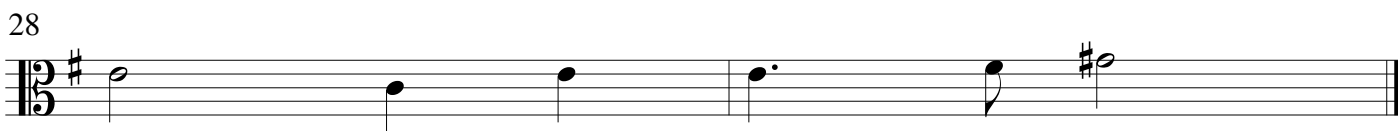
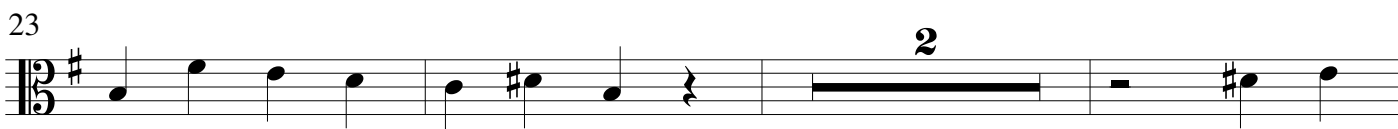


LAUDATE DOMINUM

Psalm 117 (vulgate 116)

Erasmus von der Muhl
(17th century)

Allegro



LAUDATE DOMINUM

Psalm 117 (vulgate 116)

Erasmus von der Muhl
(17th century)

Allegro

