

# Con che soavità

Libro settimo de madrigali

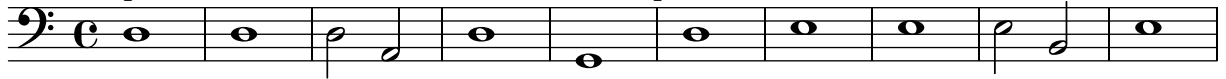
**Basso Continuo**

Claudio Monteverdi (1567 – 1643)

**Choro I**

per duoi Chitaroni & Clavecimbalo & Spinetta

11



21



35



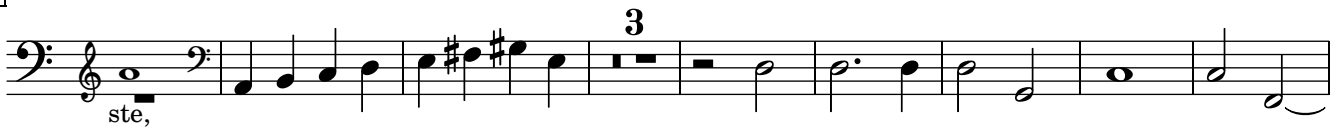
44



67



78



90



100



111



# Con che soavità

Libro settimo de madrigali

Viola da braccio

Claudio Monteverdi (1567 – 1643)

Choro II

17 Voce  
25 ba - ci e v'a - scol - to;  
33  
42  
57 Voce  
74 - a fa - re - ste,  
86  
95  
103  
113

Copyright © 2014 by the Choral Public Domain Library (<http://www.cpdll.org>)

Edition may be freely distributed, duplicated, performed, or recorded.

Revision 1.0 – 28. 08. 2014. Edition by Peter Rottländer

# Con che soavità

Libro settimo de madrigali

Violino

Claudio Monteverdi (1567 – 1643)

Choro II

17 Voce  
25 ba - ci e v'a - scol - to;  
33  
41  
57 Voce  
6 3  
74 - a fa - re - ste,  
83  
94  
102 3  
113

Copyright © 2014 by the Choral Public Domain Library (<http://www.cpdll.org>)

Edition may be freely distributed, duplicated, performed, or recorded.

Revision 1.0 – 28. 08. 2014. Edition by Peter Rottländer

# Con che soavità

Libro settimo de madrigali

Viola  
Choro II

Claudio Monteverdi (1567 – 1643)

17 Voce  
ba - ci e v'a - scol - to;

25

33

42

65

Voce  
- a fa - re - ste,

77

89

100

111

Copyright © 2014 by the Choral Public Domain Library (<http://www.cpdll.org>)

Edition may be freely distributed, duplicated, performed, or recorded.

Revision 1.0 – 28. 08. 2014. Edition by Peter Rottländer

# Con che soavità

Libro settimo de madrigali

**Basso Continuo**

Claudio Monteverdi (1567 – 1643)

**Choro II**

per il Clavecinbano

17

Voce

ba - ci e v'a - scol - to;

25

33

42

7 8

65

Voce

- a fa - re - ste,

3

77

3

88

98

3

110

Copyright © 2014 by the Choral Public Domain Library (<http://www.cpdll.org>)

Edition may be freely distributed, duplicated, performed, or recorded.

Revision 1.0 – 28. 08. 2014. Edition by Peter Rottländer

# Con che soavità

Libro settimo de madrigali

Viola da gamba

Claudio Monteverdi (1567 – 1643)

Choro III

45

Voce

- ni ma mi - a?\_\_\_\_\_

182

5

195

3

205

7

220

229

6

242

Copyright © 2014 by the Choral Public Domain Library (<http://www.cpdll.org>)

Edition may be freely distributed, duplicated, performed, or recorded.

Revision 1.0 – 28. 08. 2014. Edition by Peter Rottländer

# Con che soavità

Libro settimo de madrigali

**Basso da gamba**

Claudio Monteverdi (1567 – 1643)

**Choro III**

45

Voce

- ni ma mi - a?\_\_\_

182

3

193

2

203

212

7

227

6

242

Copyright © 2014 by the Choral Public Domain Library (<http://www.cpdll.org>)

Edition may be freely distributed, duplicated, performed, or recorded.

Revision 1.0 – 28. 08. 2014. Edition by Peter Rottländer

# Con che soavità

Libro settimo de madrigali

**Contrabasso**

Claudio Monteverdi (1567 – 1643)

**Choro III**

45

Voce

- nima mi - a?\_\_\_

Detailed description: This block shows the beginning of measure 45. It consists of two staves. The upper staff is a vocal line in treble clef, starting with a G4 quarter note, followed by a series of eighth notes (A4, B4, C5, B4, A4, G4), and ending with a half note G4. The lower staff is a basso continuo line in bass clef, starting with a whole note G3, followed by a series of eighth notes (A3, B3, C4, B3, A3, G3), and ending with a half note G3. The lyrics '- nima mi - a?\_\_\_' are written below the vocal line.

183

Detailed description: This block shows measure 183. It consists of a single bass clef staff. The melody starts with a whole note G3, followed by a series of eighth notes (A3, B3, C4, B3, A3, G3), and ends with a half note G3. A fermata is placed over the final G3. A '4' is written above the staff, indicating a four-measure rest.

196

Detailed description: This block shows measure 196. It consists of a single bass clef staff. The melody starts with a whole note G3, followed by a series of eighth notes (A3, B3, C4, B3, A3, G3), and ends with a half note G3. A fermata is placed over the final G3. A '3' is written above the staff, indicating a three-measure rest.

208

Detailed description: This block shows measure 208. It consists of a single bass clef staff. The melody starts with a whole note G3, followed by a series of eighth notes (A3, B3, C4, B3, A3, G3), and ends with a half note G3. A fermata is placed over the final G3. A '7' is written above the staff, indicating a seven-measure rest.

224

Detailed description: This block shows measure 224. It consists of a single bass clef staff. The melody starts with a whole note G3, followed by a series of eighth notes (A3, B3, C4, B3, A3, G3), and ends with a half note G3. A fermata is placed over the final G3. A '6' is written above the staff, indicating a six-measure rest.

240

Detailed description: This block shows measure 240. It consists of a single bass clef staff. The melody starts with a whole note G3, followed by a series of eighth notes (A3, B3, C4, B3, A3, G3), and ends with a half note G3. A fermata is placed over the final G3. A sharp sign is placed above the final G3.

Copyright © 2014 by the Choral Public Domain Library (<http://www.cpdll.org>)

Edition may be freely distributed, duplicated, performed, or recorded.

Revision 1.0 – 28. 08. 2014. Edition by Peter Rottländer



# Con che soavità

Libro settimo de madrigali

**Basso Continuo**

Claudio Monteverdi (1567 – 1643)

Basso Continuo per l'Organo

45

Voce



- nima mi - a?\_\_\_

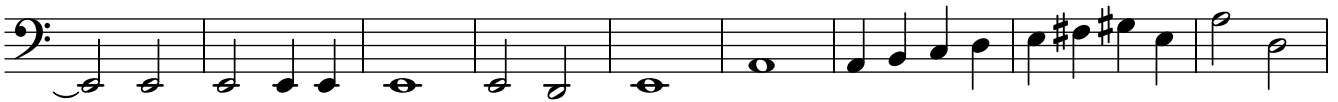
Detailed description: This block shows the beginning of the piece. It features a treble clef and a vocal line. The lyrics are "- nima mi - a?". The music is in a common time signature (C) and starts with a key signature of one sharp (F#).

53



Detailed description: This block shows measure 53, which is a single line of bass clef notation.

62



Detailed description: This block shows measure 62, which is a single line of bass clef notation.

71



Detailed description: This block shows measure 71, which is a single line of bass clef notation.

81

7



Detailed description: This block shows measure 81, which is a single line of bass clef notation. A fingering number '7' is placed above the staff.

96

6



Detailed description: This block shows measure 96, which is a single line of bass clef notation. A fingering number '6' is placed above the staff.

111



Detailed description: This block shows measure 111, which is a single line of bass clef notation.

Copyright © 2014 by the Choral Public Domain Library (<http://www.cpdll.org>)

Edition may be freely distributed, duplicated, performed, or recorded.

Revision 1.0 – 28. 08. 2014. Edition by Peter Rottländer