

MISSA PRO DEFUNCTIS

AGNUS DEI

Handwritten musical score for the Agnus Dei section of the Missa pro Defunctis. The score is written on multiple staves, including vocal parts and violins. The lyrics are: "Agnus Dei qui tollis peccata mundi, dona deus a nobis requiem".

Source: Missa pro Defunctis a cinque voci con violini obligati - partitura ms., Pisa 6 Nov 1725.

Giovanni Carlo Maria Clari
1677 - 1754

Printed musical score for the Agnus Dei section, including instrumental and vocal parts. The score is written on multiple staves, including Violin-1, Violin-2, Viola, Soprano primo, Soprano secundo, Alto, Tenore, Basso, and Basso continuo. The lyrics are: "Agnus Dei, agnus Dei, qui tollis peccata mundi, dona deus a nobis requiem".

Missa pro Defunctis / Agnus Dei

4

Vi1

Vi2

Va

S1

ca - ta mun - di, do - na, do - na e - is re - qui-em.

S2

ca - ta mun - di, do - na, do - na e - is re - qui-em.

A

ca - ta mun - di, do - na, do - na e - is re - qui - em.

T

8

ca - ta mun - di, do - na, do - na e - is re - qui-em.

B

ca - ta mun - di, do - na, do - na e - is re - qui-em.

BC

4 # 4 # 9 7 4 #

8

Vi1

Vi2

Va

S1

Ag - nus De - i, qui tol - lis, qui tol - lis pec - ca - ta, pec -

S2

Ag - nus, ag - nus De - i, qui tol - lis pec - ca - ta mun - di, do -

A

Ag - nus De - i, qui tol - lis, qui tol - lis pec - ca - ta mun - di, do -

T

8

Ag - nus De - i, qui tol - lis pec - ca - ta

B

Ag - nus, ag - nus De - i, qui tol - lis, qui tol - lis pec - ca - ta mun - di, do -

BC

8

7 6# 7 6 4 # 4 3 7 6 4 # 9 8

Missa pro Defunctis / Agnus Dei

13

Vi1

Vi2

Va

S1

S2

A

T

B

BC

ca - ta mun - di, do - na e - is re - qui - em. Ag - nus De - i, qui
 - na, do - na e - is, do - na e - is re - qui-em. Ag - nus De - i, qui
 na, do - na e - is re - qui-em. Ag - nus De - i, qui
 mun - di, do - na, do - na e - is re - qui - em. Ag - nus De - i, qui
 na, do - na e - is, do - na e - is re - qui-em. Ag - nus De - i, qui

7 6# 7 6 7 6 7 4 # 6 #

17

Vi1

Vi2

Va

S1

S2

A

T

B

BC

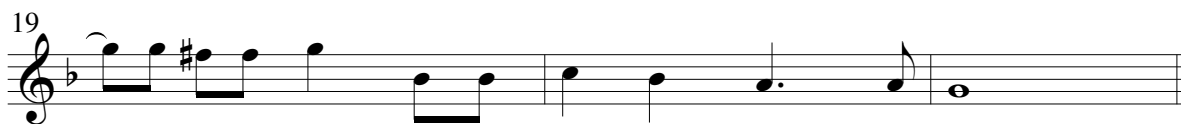
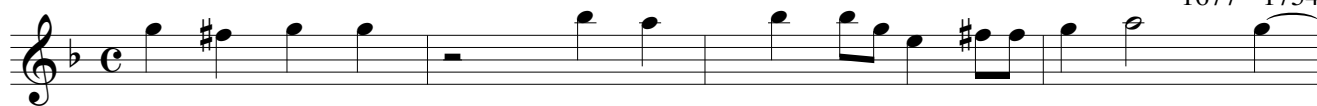
tol - lis pec-ca - ta mun - di, do - na e - is re - qui-em sem - pi - ter - nam.
 tol - lis pec-ca - ta mun - di, do - na e - is re - qui-em sem - pi - ter - nam.
 tol - lis pec-ca - ta mun - di, do - na e - is re - qui-em sem - pi - ter - nam.
 tol - lis pec-ca - ta mun - di, do - na e - is re - qui-em sem - pi - ter - nam.
 tol - lis pec-ca - ta mun - di, do - na e - is re - qui-em sem - pi - ter - nam.

6 7 6# # b

MISSA PRO DEFUNCTIS

AGNUS DEI

Giovanni Carlo Maria Clari
1677 - 1754



MISSA PRO DEFUNCTIS

AGNUS DEI

Giovanni Carlo Maria Clari
1677 - 1754



MISSA PRO DEFUNCTIS

AGNUS DEI

Giovanni Carlo Maria Clari
1677 - 1754



Basso continuo

MISSA PRO DEFUNCTIS

AGNUS DEI

Giovanni Carlo Maria Clari
1677 - 1754

1
6 2 4 6#

5
4 # 9 7 4 #

8
7 6# 7 6 4 # 4 3 7 6 4 # 9 8

13
7 6# 7 6 7 6 7 # 4 #

16
6 # 6 7 6#

19
b